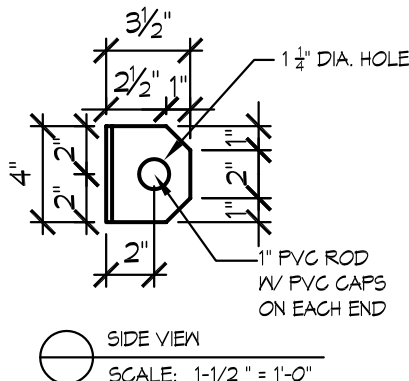
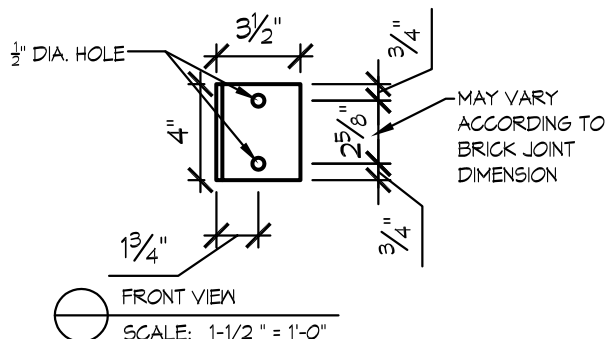


Banners

Screen printed for two-sided finish on marine acrylic fabric. Can be same art both sides, or different art on front/back. Sewn to the following specifications: 3.5" pole pockets with 3" openings, (2) brass grommets, 1/2" hem on side edges. All seams are double-stitched, pole pockets are lined with vinyl.

WALL MOUNTING BRACKET SPECIFICATIONS

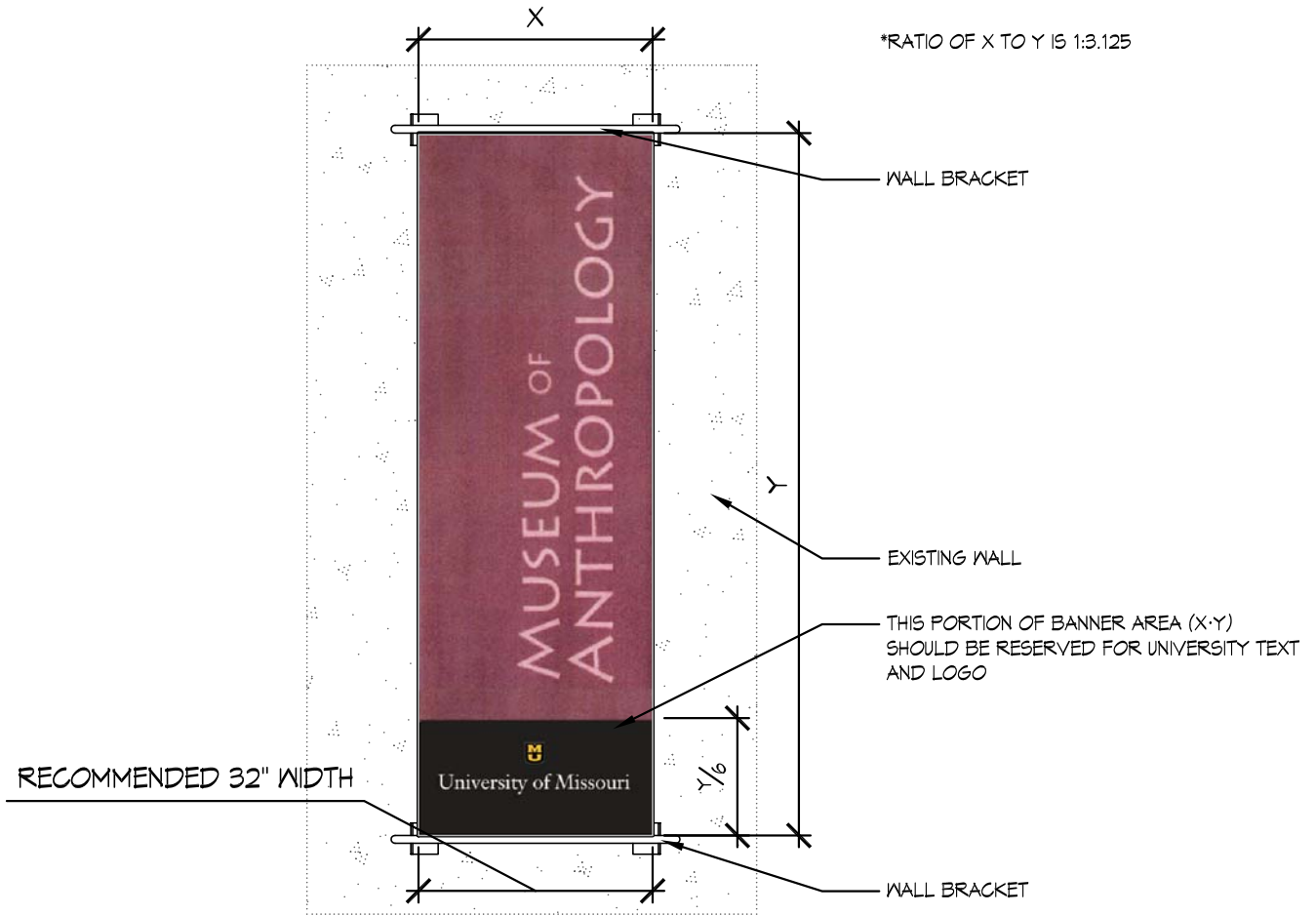


BANNER TEMPLATE - ABOVE WINDOW OR DOOR

SCALE: 1/2" = 1'-0"

NOT FOR CONSTRUCTION

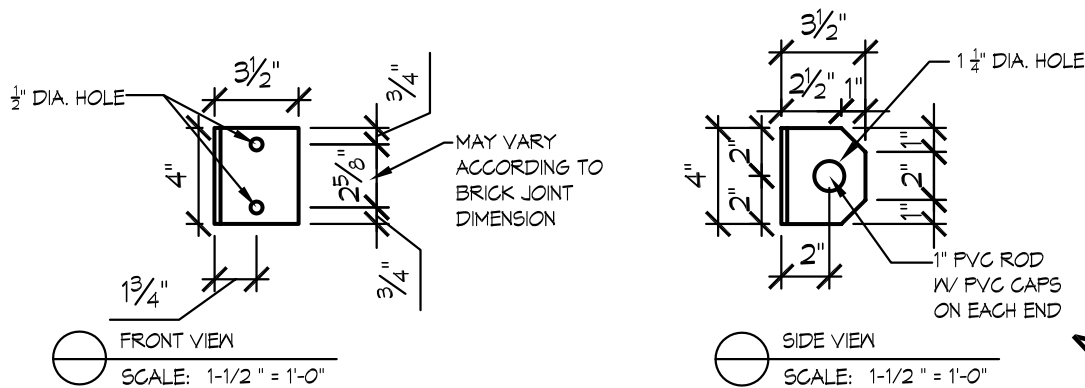
DATE: 01/13/09	VARIOUS BANNER TEMPLATE	PROJECT NUMBER															
<table border="1" style="width: 100%; border-collapse: collapse;"> <tr><td style="width: 30px; height: 20px; text-align: center;">▲</td><td style="width: 30px; height: 20px;"></td><td style="width: 30px; height: 20px;"></td></tr> <tr><td style="width: 30px; height: 20px; text-align: center;">▲</td><td style="width: 30px; height: 20px;"></td><td style="width: 30px; height: 20px;"></td></tr> <tr><td style="width: 30px; height: 20px; text-align: center;">▲</td><td style="width: 30px; height: 20px;"></td><td style="width: 30px; height: 20px;"></td></tr> </table>	▲			▲			▲			<table border="1" style="width: 100%; border-collapse: collapse;"> <tr> <td style="width: 30%; padding: 5px;">DWN BY:</td> <td style="width: 40%; text-align: center; padding: 5px;">MU CAMPUS FACILITIES</td> <td style="width: 30%; padding: 5px;"><i>Design Services</i></td> </tr> <tr> <td style="padding: 5px;">CKD BY:</td> <td style="text-align: center; padding: 5px;"><i>Planning, Design & Construction</i></td> <td style="text-align: center; padding: 5px;">UNIVERSITY OF MISSOURI</td> </tr> </table>	DWN BY:	MU CAMPUS FACILITIES	<i>Design Services</i>	CKD BY:	<i>Planning, Design & Construction</i>	UNIVERSITY OF MISSOURI	SHEET
▲																	
▲																	
▲																	
DWN BY:	MU CAMPUS FACILITIES	<i>Design Services</i>															
CKD BY:	<i>Planning, Design & Construction</i>	UNIVERSITY OF MISSOURI															
		of															



Banners

Screen printed for two-sided finish on marine acrylic fabric. Can be same art both sides, or different art on front/back. Sewn to the following specifications: 3.5" pole pockets with 3" openings, (2) brass grommets, 1/2" hem on side edges. All seams are double-stitched, pole pockets are lined with vinyl.

WALL MOUNTING BRACKET SPECIFICATIONS



BANNER TEMPLATE - WALL

SCALE: 1/2" = 1'-0"

NOT FOR CONSTRUCTION

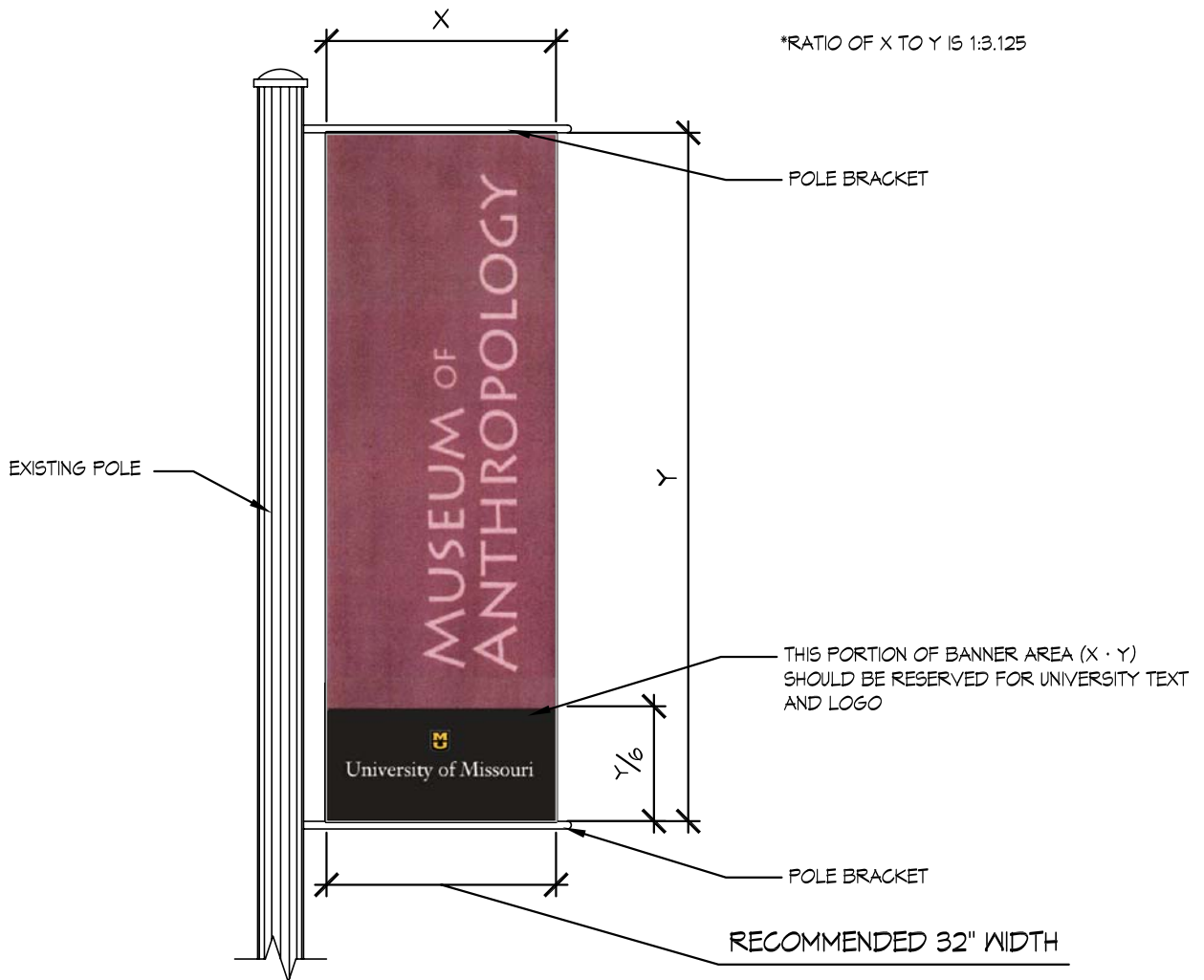
DATE: 01/13/09
▲
▲
▲
DWN BY:
CKD BY:

VARIOUS BANNER TEMPLATE

MU CAMPUS FACILITIES *Design Services*

Planning, Design & Construction UNIVERSITY OF MISSOURI

PROJECT NUMBER
SHEET
of



*Mounting brackets to be BannerMASTER Single Bracket or BannerMASTER Double Bracket as manufactured by Zane Williams, Inc. 5757 Manchester Avenue Saint Louis, Mo 63110 (or approved equal).

Banners

Screen printed for two-sided finish on marine acrylic fabric. Can be same art both sides, or different art on front/back. Sewn to the following specifications: 3.5" pole pockets with 3" openings, (2) brass grommets, 1/2" hem on side edges. All seams are double-stitched, pole pockets are lined with vinyl.

POLE MOUNTING BRACKETS AND SPECIFICATIONS

BannerMASTER Single Bracket

Includes all hardware needed to install (1) banner per pole.

- (6) Stainless Steel Clamps
- (2) Fiberglass Rods
- (2) Cast Aluminum Back Plates
- (2) Cast Aluminum Rod Holders
- (4) 3/8" x 1.5" Stainless Steel Bolts
- (4) 3/8" Stainless Steel Lock Washers
- (4) 3/8" Stainless Steel Hex Nuts

BannerMASTER Double Bracket

Includes all hardware needed to install (2) banners per pole.

- (6) Stainless Steel Clamps
- (4) Fiberglass Rods
- (4) Cast Aluminum Back Plates
- (4) Cast Aluminum Rod Holders
- (8) 3/8" x 1.5" Stainless Steel Bolts
- (8) 3/8" Stainless Steel Lock Washers
- (8) 3/8" Stainless Steel Hex Nuts

NOT FOR CONSTRUCTION



BANNER TEMPLATE - POLE

SCALE: 1/2" = 1'-0"

DATE: 01/13/09	VARIOUS BANNER TEMPLATE	PROJECT NUMBER												
<table border="1" style="width: 100%; border-collapse: collapse;"> <tr><td style="width: 20px; height: 20px; text-align: center;">▲</td><td style="width: 20px; height: 20px;"></td></tr> <tr><td style="width: 20px; height: 20px; text-align: center;">▲</td><td style="width: 20px; height: 20px;"></td></tr> <tr><td style="width: 20px; height: 20px; text-align: center;">▲</td><td style="width: 20px; height: 20px;"></td></tr> </table>	▲		▲		▲		<table border="1" style="width: 100%; border-collapse: collapse;"> <tr> <td style="width: 30%; padding: 5px;">MU</td> <td style="padding: 5px;">CAMPUS FACILITIES</td> <td style="padding: 5px;"><i>Design Services</i></td> </tr> <tr> <td style="padding: 5px;"></td> <td style="padding: 5px;"><i>Planning, Design & Construction</i></td> <td style="padding: 5px;">UNIVERSITY OF MISSOURI</td> </tr> </table>	MU	CAMPUS FACILITIES	<i>Design Services</i>		<i>Planning, Design & Construction</i>	UNIVERSITY OF MISSOURI	SHEET
▲														
▲														
▲														
MU	CAMPUS FACILITIES	<i>Design Services</i>												
	<i>Planning, Design & Construction</i>	UNIVERSITY OF MISSOURI												
DWN BY:		of												
CKD BY:														